



Sky Capital  
— New Capital —

☎ 1536

01227000507



4 Salah Eldien st. From Salah Salem Road  
Second Floor - Flat 205



Sky Capital  
— New Capital —





We aim to offer our clients the best home services and outstanding level through the selection of the best locations and the best engineering designs and precision in execution to achieve our goal which is the best home.

**Better House**  
company for real estate development

Working in real estate development to form models for distinct housing units and sophisticated for the development of the field of real estate in Egypt our beloved country and our biggest focus in the new cities in order to make a better future away from the crowding and noise.



## Sky Capital

Is the latest Better House project residential apartments, duplex ,villas.  
another level of luxury

The project includes many services and facilities designed in a modern way to provide a better life.

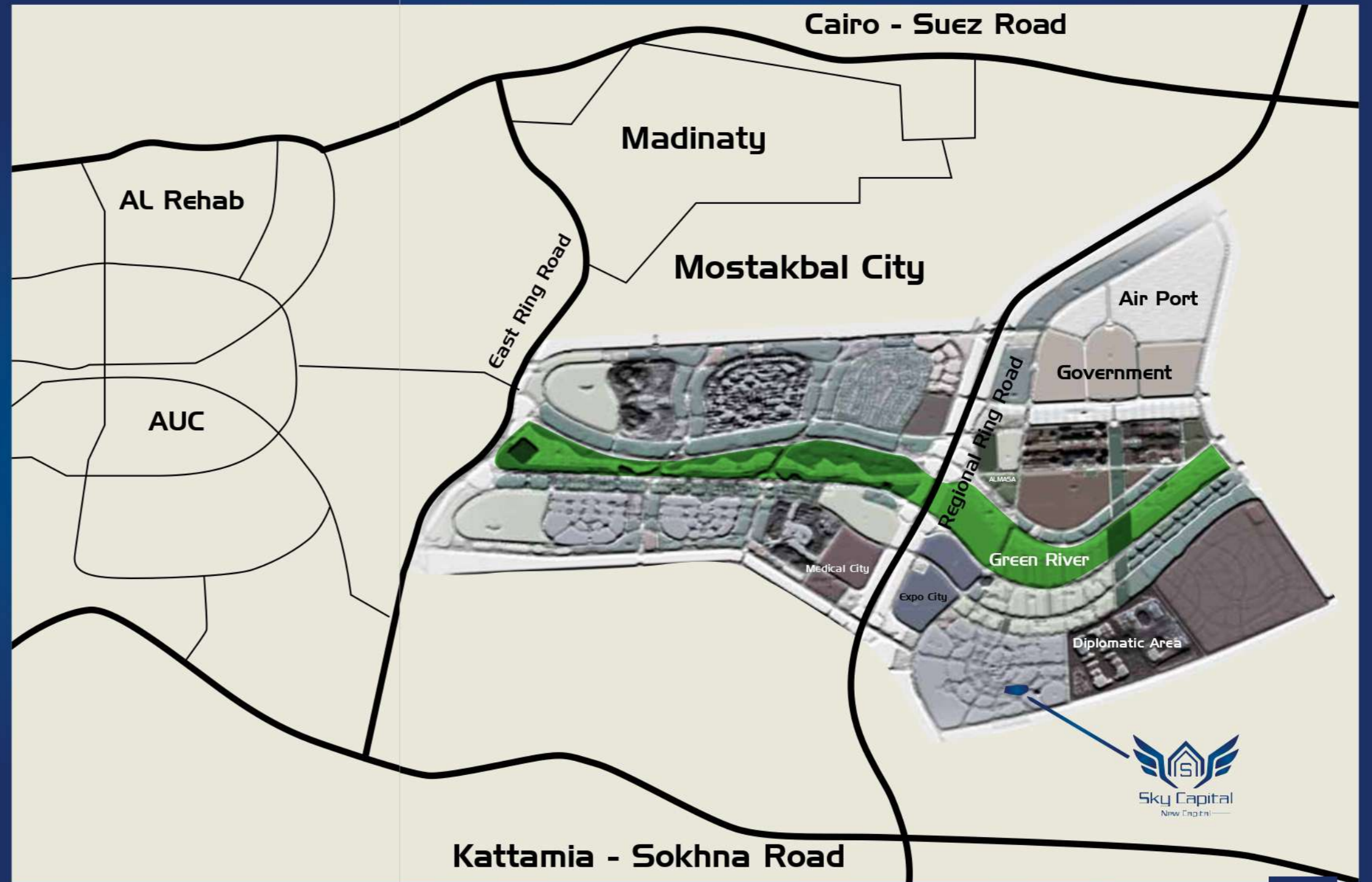
The compound is located in the best locations of the new administrative Capital (R7) next to the al Masa hotel and the government district

district of the embassies and the mosque of Al-Fattah Al-Aleem and cathedral and the logic of business and the Green River.





☎ 15136





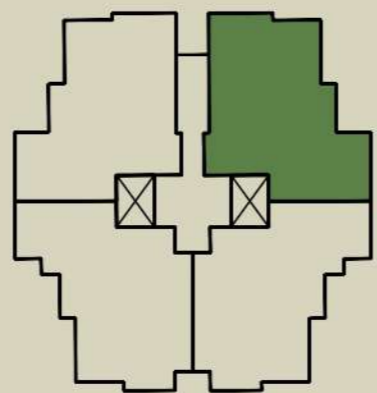
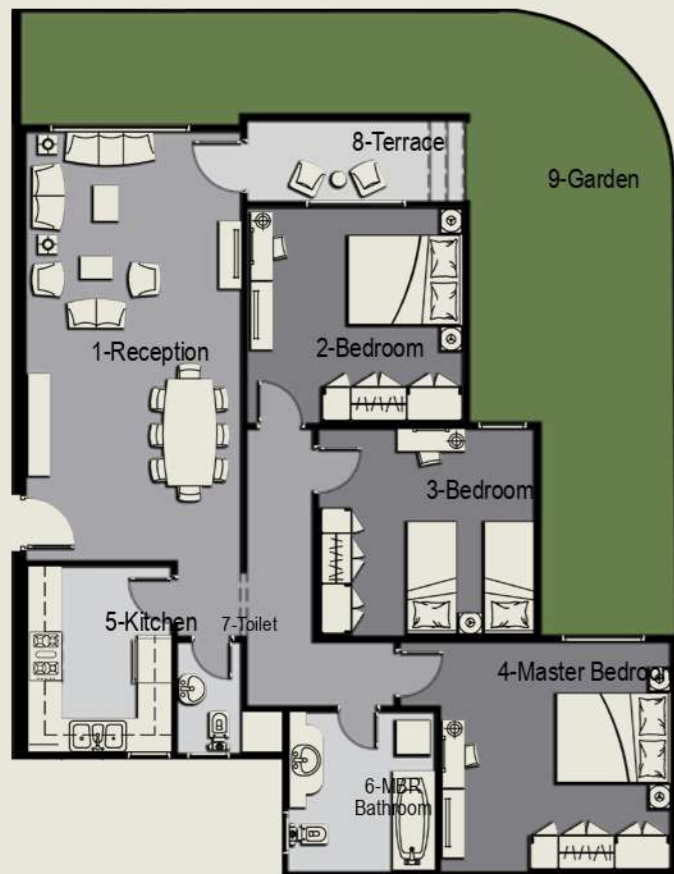
Sky Capital  
— New Capital —





Sky Capital  
— New Capital —

# Garden - TYPE C



| Dimensions        |                   |
|-------------------|-------------------|
| 1- Reception      | 7.4x3.7 m         |
| 2- Bedroom        | 3.75x3.75 m       |
| 3- Bedroom        | 3.75x3.72 m       |
| 4- Master Bedroom | 4.5x4 m           |
| 5- Kitchen        | 3.25x2.6 m        |
| 6- Bathroom       | 2.78x2.5 m        |
| 7- Toilet         | 1.9x1.5 m         |
| 8- Terrace        | 3.8x1.4 m         |
| 9- Garden         | 50 m <sup>2</sup> |

155 M<sup>2</sup>

155 M<sup>2</sup>

15136

15136



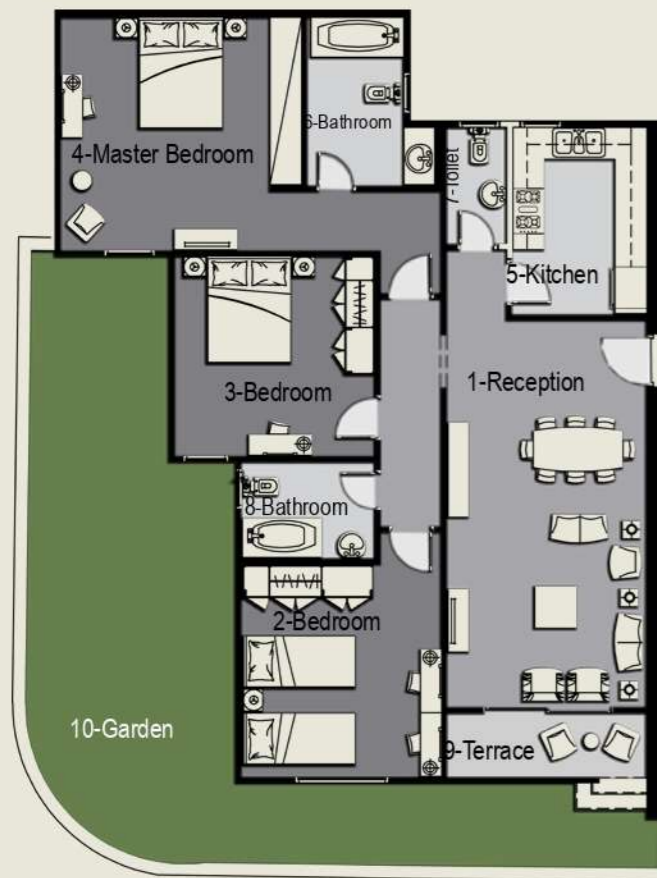
Sky Capital  
New Capital

عيش الحلم

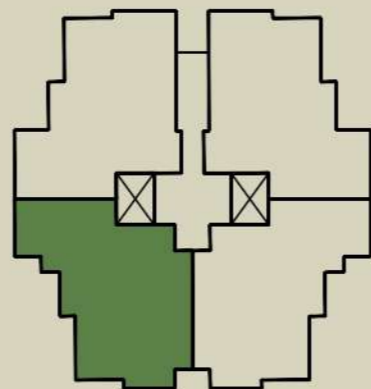


B

## Garden - TYPE B



**165 M<sup>2</sup>**



| Dimensions        |             |
|-------------------|-------------|
| 1- Reception      | 7.25x4.25 m |
| 2- Bedroom        | 3.75x3.6 m  |
| 3- Bedroom        | 3.75x3.7 m  |
| 4- Master Bedroom | 4x4 m       |
| 5- Kitchen        | 3.25x3.67 m |
| 6- Bathroom       | 2.6x2.5 m   |
| 7- Toilet         | 1.98x1.38 m |
| 8- Bathroom       | 2.6x2.5 m   |
| 9- Terrace        | 3.71x1.6 m  |
| 10- Garden        | 3.71x1.4 m  |

165 M<sup>2</sup>

☎ 15136



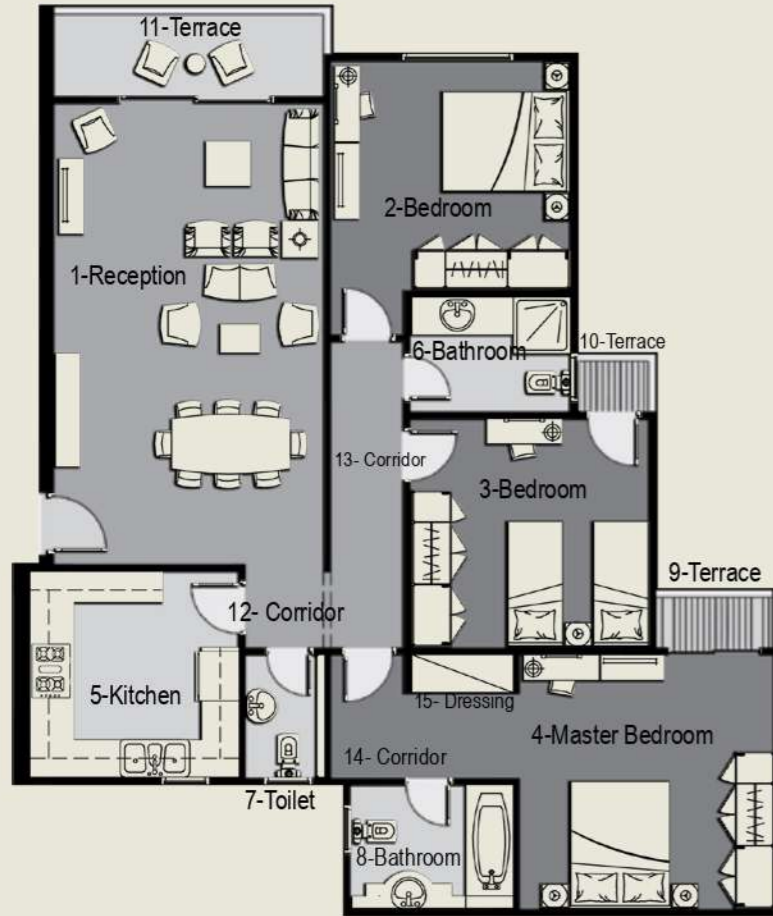
☎ 15136



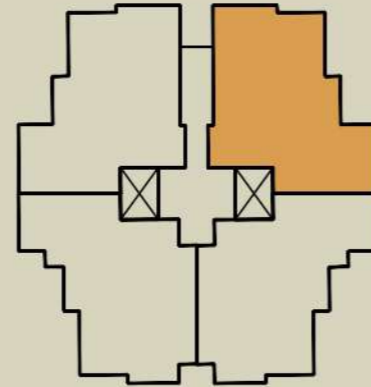
**Sky Capital**  
New Capital

طبيعة الحياة

TYPICAL - TYPE C



170 M<sup>2</sup>



| Dimensions        |             |
|-------------------|-------------|
| 1- Reception      | 7.3x4.5 m   |
| 2- Bedroom        | 3.75x3.72 m |
| 3- Bedroom        | 3.75x3.72 m |
| 4- Master Bedroom | 4.1x4.12 m  |
| 5- Kitchen        | 3.6x3.4 m   |
| 6- Bathroom       | 2.5x1.95 m  |
| 7- Toilet         | 1.35x2 m    |
| 8- Bathroom       | 2.5x2.1 m   |
| 9- Terrace        | 1.32x0.95 m |
| 10- Terrace       | 0.95x0.95 m |
| 11-Terrace        | 3.25x1.35 m |
| 12- Corridor      | 1.45x1.35 m |
| 13- Corridor      | 1.13x5.2 m  |
| 14- Corridor      | 3.1x2.1 m   |
| 15- Dressing      | 1.6x0.75 m  |

170 M<sup>2</sup>

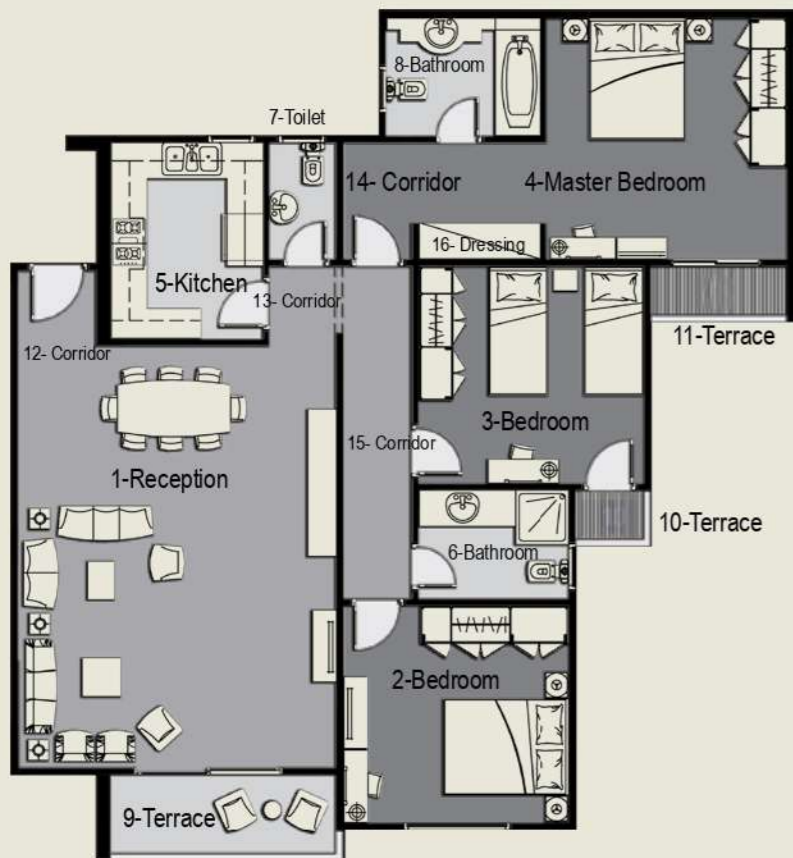


Sky Capital  
— New Capital —

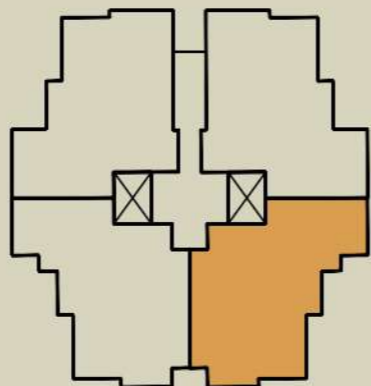
عيش الحلم



## TYPICAL - TYPE C



180 M<sup>2</sup>



| Dimensions        |             |
|-------------------|-------------|
| 1- Reception      | 7.25x5.5 m  |
| 2- Bedroom        | 3.85x3.85 m |
| 3- Bedroom        | 3.85x3.88 m |
| 4- Master Bedroom | 4.1x4.13 m  |
| 5- Kitchen        | 3.5x2.8 m   |
| 6- Bathroom       | 2.6x2.05 m  |
| 7- Toilet         | 1.35x2.15 m |
| 8- Bathroom       | 2.6x2.20 m  |
| 9- Terrace        | 3.1x1.5 m   |
| 10- Terrace       | 1.00x1.25 m |
| 11-Terrace        | 1.45x1 m    |
| 12- Corridor      | 1.40x1.25 m |
| 13- Corridor      | 1.45x1.2 m  |
| 14- Corridor      | 2.15x3.5 m  |
| 15- Corridor      | 5.75x1.25 m |
| 16- Dressing      | 2.15x0.75 m |

180 M<sup>2</sup>

15136

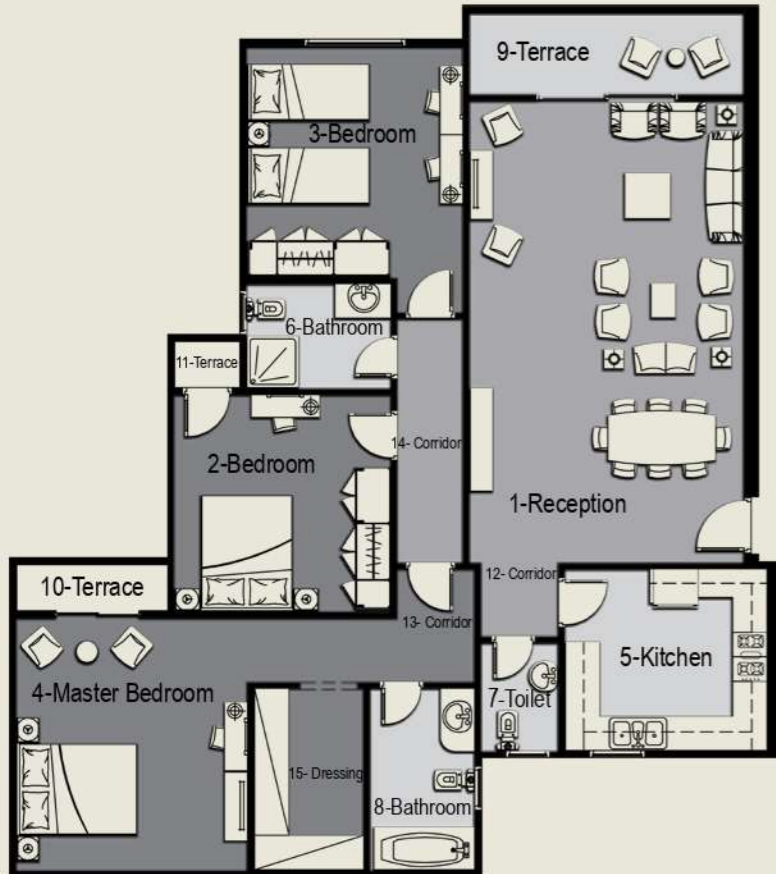


Sky Capital

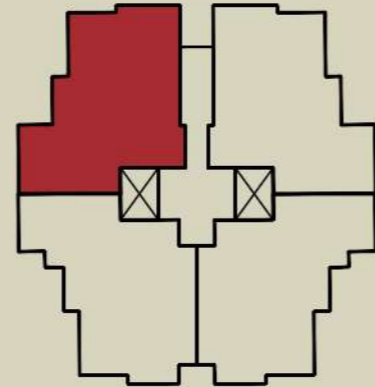
New Capital

فرحة العائلة

# TYPICAL - TYPE B



**200 M<sup>2</sup>**



| Dimensions        |             |
|-------------------|-------------|
| 1- Reception      | 7.95x4.95 m |
| 2- Bedroom        | 4x3.90 m    |
| 3- Bedroom        | 4.1x3.9 m   |
| 4- Master Bedroom | 4.35x4.1 m  |
| 5- Kitchen        | 3.8x3.15 m  |
| 6- Bathroom       | 2.65x1.95 m |
| 7- Toilet         | 1.9x1.35 m  |
| 8- Bathroom       | 3.25x2 m    |
| 9- Terrace        | 3.45x1.45 m |
| 10- Terrace       | 1.45x0.95 m |
| 11- Terrace       | 1.05x0.95 m |
| 12- Corridor      | 1.4x1.35 m  |
| 13- Corridor      | 4.25x1.3 m  |
| 14- Corridor      | 1.25x5.1 m  |
| 15- Dressing      | 2x3.25 m    |

**200 M<sup>2</sup>**

1536

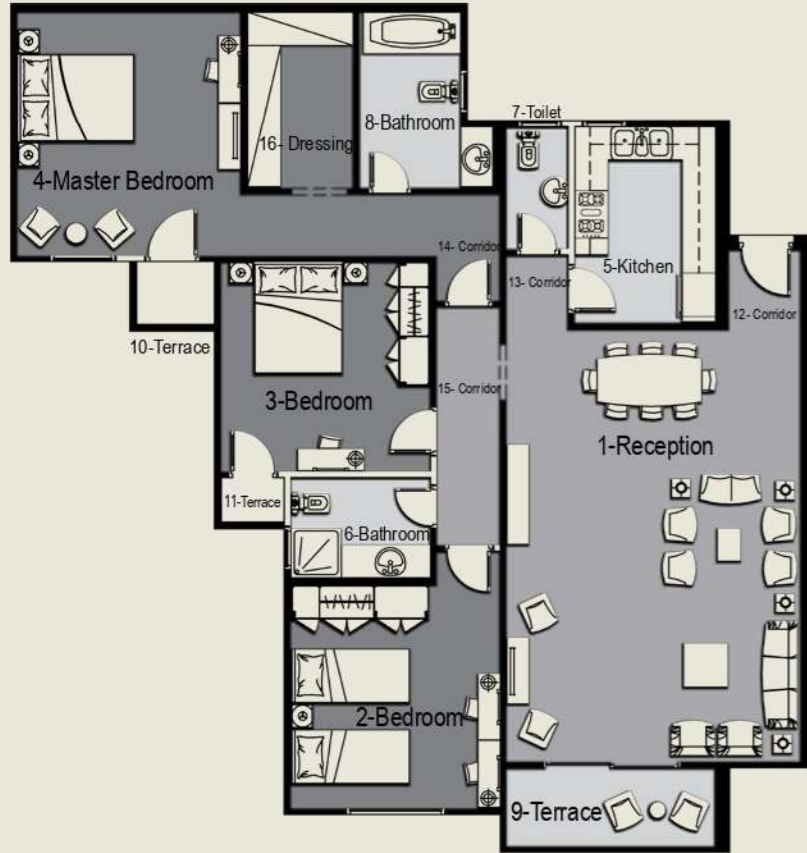


**Sky Capital**

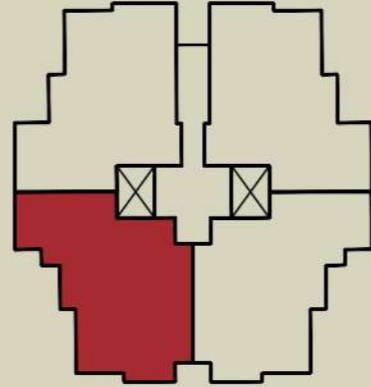
New Capital

عيش السعادة

**TYPICAL - TYPE B**



**205 M<sup>2</sup>**



| Dimensions        |             |
|-------------------|-------------|
| 1- Reception      | 8.05x5.4 m  |
| 2- Bedroom        | 4x4 m       |
| 3- Bedroom        | 3.9x4 m     |
| 4- Master Bedroom | 4.1x4.35 m  |
| 5- Kitchen        | 3.45x2.8 m  |
| 6- Bathroom       | 2.65x1.95 m |
| 7- Toilet         | 2.2x1.65 m  |
| 8- Bathroom       | 2.05x3.15 m |
| 9- Terrace        | 3.45x1.45 m |
| 10- Terrace       | 1.45x0.95 m |
| 11-Terrace        | 1.25x1 m    |
| 12- Corridor      | 1.45x1.45 m |
| 13- Corridor      | 1.35x1.25 m |
| 14- Corridor      | 1.25x4.8 m  |
| 15- Corridor      | 5.8x1.25 m  |
| 16- Dressing      | 3.15x2 m    |

**205 M<sup>2</sup>**

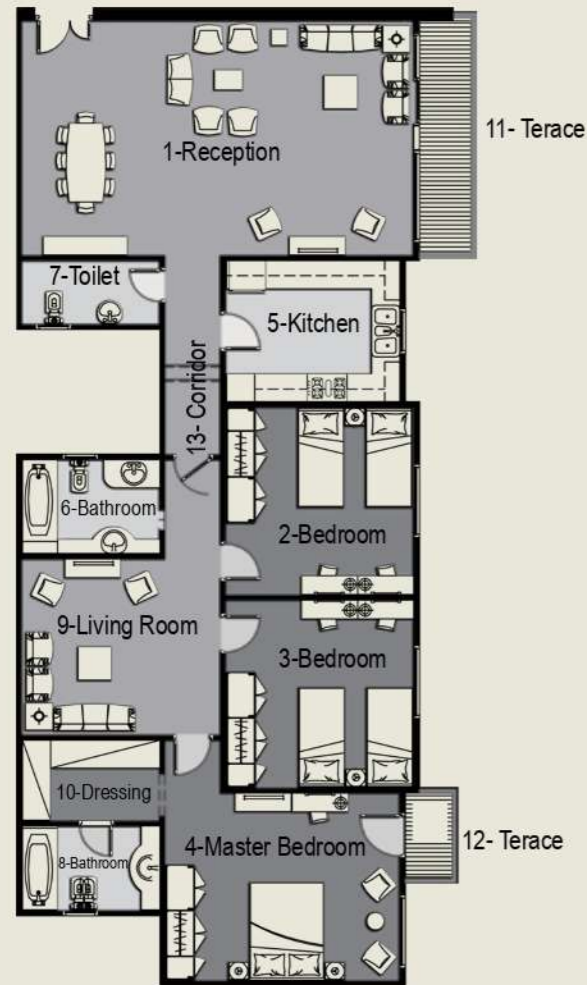


**Sky Capital**

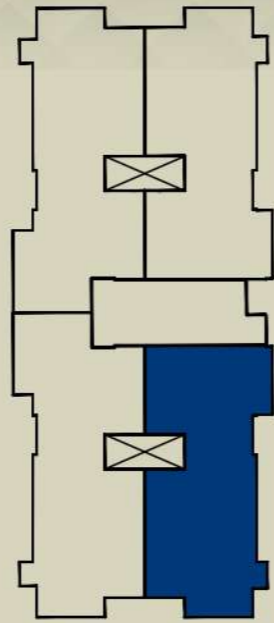
New Capital

جمال الطبيعة

# TYPICAL - TYPE A

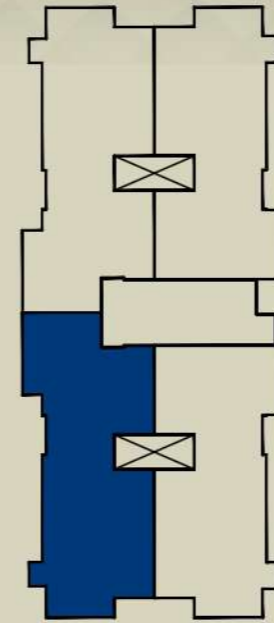


**235 M<sup>2</sup>**



| Dimensitions       |             |
|--------------------|-------------|
| 1- Reception       | 8.6x5.25 m  |
| 2- Bedroom         | 4.15x4.15 m |
| 3- Bedroom         | 4.15x4.15 m |
| 4- Master Bedroom  | 5.15x4.15 m |
| 5- Kitchen         | 3.85x3 m    |
| 6- Bathroom        | 3.05x2.15 m |
| 7- Toilet          | 3.05x1.5 m  |
| 8- Master Bathroom | 3.05x1.95 m |
| 9- Living Room     | 3.9x4.35 m  |
| 10- Dressing       | 3.05x2 m    |
| 11- Terrace        | 5.25x1.25 m |
| 12- Terrace        | 1.95x1.15 m |
| 13- Corridor       | 7.75x1.3 m  |

**235 M<sup>2</sup>**



| Dimensitions       |             |
|--------------------|-------------|
| 1- Reception       | 7.9x8.5 m   |
| 2- Bedroom         | 4.15x4.15 m |
| 3- Bedroom         | 4.15x4.15 m |
| 4- Master Bedroom  | 5.15x4.15 m |
| 5- Kitchen         | 3.2x3.85 m  |
| 6- Bathroom        | 2.15x3.05 m |
| 7- Toilet          | 3.05x1.5 m  |
| 8- Master Bathroom | 3.05x1.95 m |
| 9- Living Room     | 4.35x3.9 m  |
| 10- Dressing       | 3.05x1.85 m |
| 11- Terrace        | 6.15x1.5 m  |
| 12- Terrace        | 1.75x1.35 m |
| 13- Corridor       | 7.75x1.3 m  |

**245 M<sup>2</sup>**

# TYPICAL - TYPE A



**245 M<sup>2</sup>**

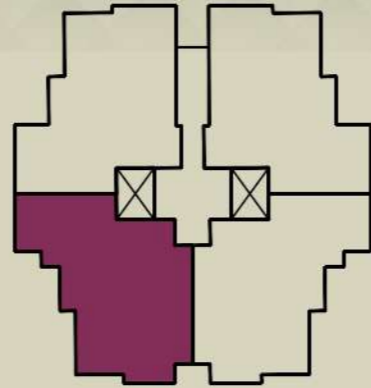


Sky Capital  
New Capital

فردية العائلة



## DUPLEX - TYPE C

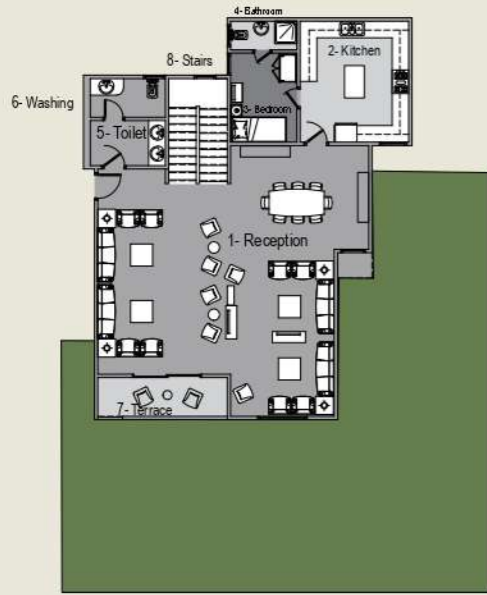
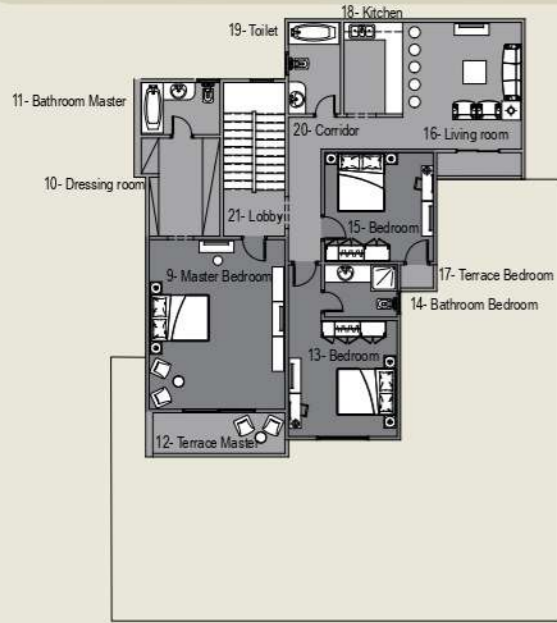


| Dimensions            |             |
|-----------------------|-------------|
| 1- Reception          | 8.6x7.9 m   |
| 2- Kitchen            | 4.1x4.1 m   |
| 3- Bedroom            | 3.4x2.7 m   |
| 4- Bathroom           | 1.45x2.5 m  |
| 5- Toilet             | 2.2x2.05 m  |
| 6- Washing            | 1.4x2.05 m  |
| 7- Terrace            | 1.6x4.6 m   |
| 8- Stairs             | 2.25x3.6 m  |
| 9- Master Bedroom     | 4.25x4.8 m  |
| 10- Dressing room     | 3.7x2.2 m   |
| 11- Bathroom Master   | 2.25x3.15 m |
| 12- Terrace Master    | 3.25x1.4 m  |
| 13- Master room lobby | 2.7x2.05 m  |
| 14- Bathroom          | 2.3x2.6 m   |
| 15- Bedroom           | 5.45x4.85 m |
| 16- Living room       | 5x3.75 m    |
| 17- Terrace Living    | 1.25x0.95 m |
| 18- Kitchen           | 2x2.5 m     |
| 19- Bedroom           | 5x3.75 m    |

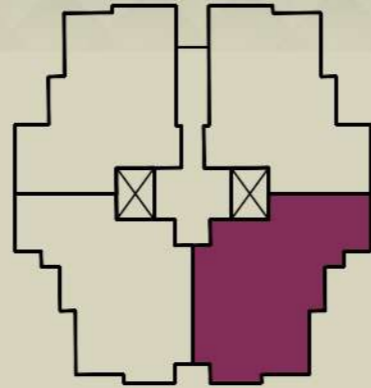
335 M<sup>2</sup>

335 M<sup>2</sup>

# DUPLEX - TYPE B



380 M<sup>2</sup>



| Dimensions           |            |
|----------------------|------------|
| 1- Reception         | 9.8x8.5 m  |
| 2- Kitchen           | 4x4.35 m   |
| 3- Bedroom           | 3.2x3.25 m |
| 4- Bathroom          | 1.3x2.5 m  |
| 5- Toilet            | 2.1x2.3m   |
| 6- Washing           | 1.75x2.3 m |
| 7- Terrace           | 1.4x3.6 m  |
| 8- Stairs            | 3.8x2.85 m |
| 9- Master Bedroom    | 5.6x4.85 m |
| 10- Dressing room    | 3.3x4.25 m |
| 11- Bathroom Master  | 3.3x2.1 m  |
| 12- Terrace Master   | 1.4x3.45 m |
| 13- Bedroom          | 3.9x3.75 m |
| 14- Bathroom Bedroom | 2.7x2 m    |
| 15- Bedroom          | 4.2x4 m    |
| 16- Living room      | 4.3x4 m    |
| 17- Terrace Bedroom  | 1.4x0.95 m |
| 18- Kitchen          | 2.15x3.2 m |
| 19- Toilet           | 3.2x2 m    |
| 20- Corridor         | 1.25x4.8 m |
| 21- Lobby            | 1.65x3.4 m |

380 M<sup>2</sup>

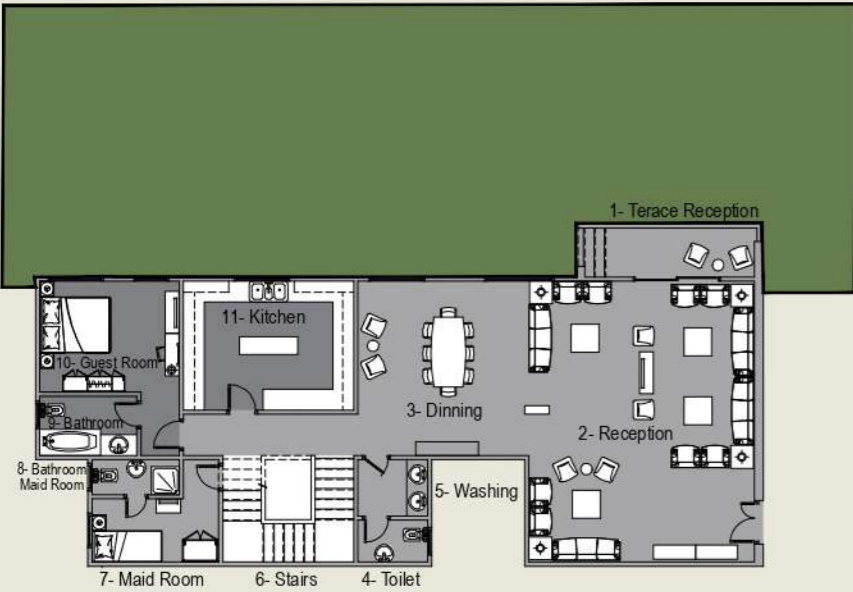
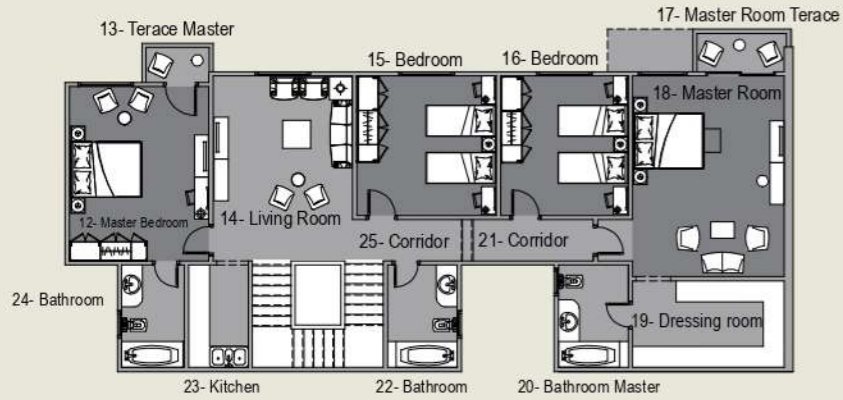


Sky Capital

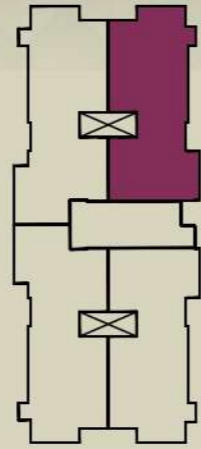
New Capital

متعة الرفاهية

# DUPLEX - TYPE A



450 M<sup>2</sup>



| Dimenitions             |             |
|-------------------------|-------------|
| 1- Terrace Reception    | 1.5x5.15 m  |
| 2- Reception            | 8.3x6.75 m  |
| 3- Dinning              | 5.25x5.15 m |
| 4- Toilet               | 2.15x1.35 m |
| 5- Washing              | 2.15x1.75 m |
| 6- Stairs               | 4x3.30 m    |
| 7- Maid Room            | 2.25x3.75 m |
| 8- Bathroom Maid Room   | 2.6x1.15 m  |
| 9- Bathroom             | 1.85x2.9 m  |
| 10- Guest Room          | 3.3x4.1 m   |
| 11- Kitchen             | 5x3.9 m     |
| 12- Master Bedroom      | 4.15x5.15 m |
| 13- Terrace Master      | 1.95x1.2 m  |
| 14- Living Room         | 5.5x4.15 m  |
| 15- Bedroom             | 4.15x4.15 m |
| 16- Bedroom             | 3.8x3.9 m   |
| 17- Master Room Terrace | 2.65x1.45 m |
| 18- Master Room         | 5.65x4.5 m  |
| 19- Dressing room       | 4.5x2.55 m  |
| 20- Bathroom Master     | 2.15x3.05 m |
| 21- Corridor            | 8x1.3 m     |
| 22- Bathroom            | 3.1x2.15 m  |
| 23- Kitchen             | 3.1x1.85 m  |
| 24- Bathroom            | 1.95x3.1 m  |
| 25- Corridor            | 6.15x1.3 m  |

450 M<sup>2</sup>

15136

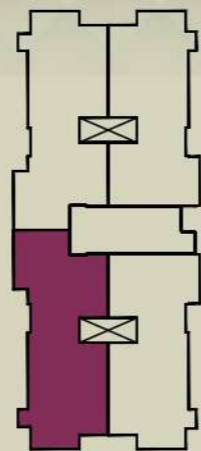
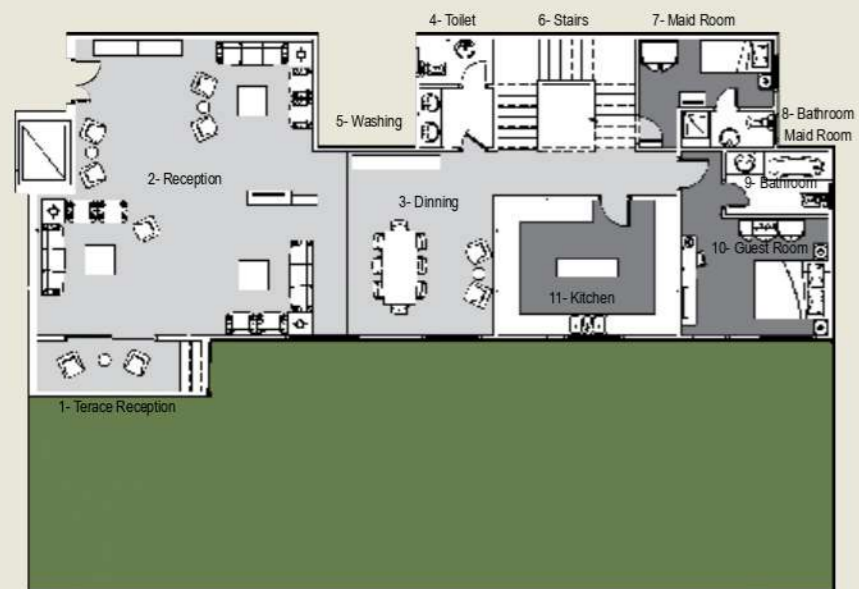
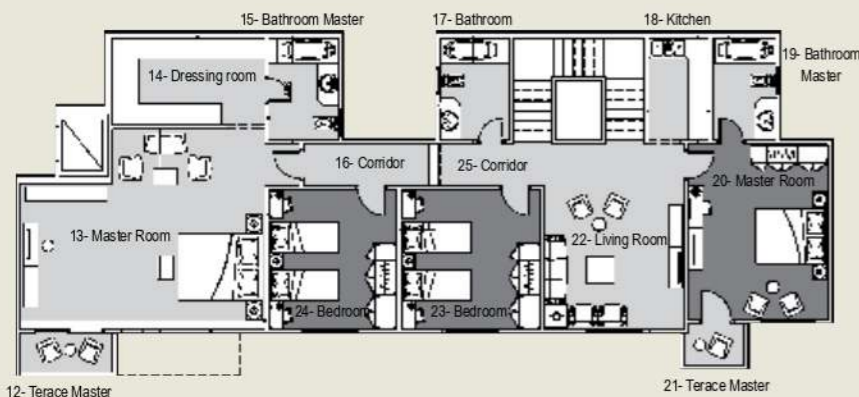
15136

Sky Capital  
New Capital

عيش الحلم



# DUPLEX - TYPE A



| Dimensions            |             |
|-----------------------|-------------|
| 1- Terrace Reception  | 4.7x1.25 m  |
| 2- Reception          | 8.6x6.75 m  |
| 3- Dinning            | 5.15x5.1 m  |
| 4- Toilet             | 2.15x1.35 m |
| 5- Washing            | 2.15x1.75 m |
| 6- Stairs             | 4x3.10 m    |
| 7- Maid Room          | 2x3.8 m     |
| 8- Bathroom Maid Room | 2.65x1.15 m |
| 9- Bathroom           | 1.85x2.9 m  |
| 10- Guest Room        | 3.3x4.15 m  |
| 11- Kitchen           | 5x3.85 m    |
| 12- Terrace Master    | 2.8x1.25 m  |
| 13- Master Room       | 7.15x5.8 m  |
| 14- Dressing room     | 4.5x2.75 m  |
| 15- Bathroom Master   | 3x2.15 m    |
| 16- Corridor          | 8x1.3 m     |
| 17- Bathroom          | 2.15x3.1 m  |
| 18- Kitchen           | 1.85x3.05 m |
| 19- Bathroom Master   | 3.05x1.95 m |
| 20- Master Room       | 5.15x4.15 m |
| 21- Terrace Master    | 1.9x1.35 m  |
| 22- Living Room       | 5.45x4.15 m |
| 23- Bedroom           | 4.15x4.15 m |
| 24- Bedroom           | 3.8x4.15 m  |
| 25- Corridor          | 6.25x1.3 m  |

455 M<sup>2</sup>

455 M<sup>2</sup>

15136



15136



Sky Capital  
New Capital

عيش السعادة

# FACILITIES



**Green Areas  
& Community Garden**



**Kids Club  
& Kids Area**



**Building  
Access Card**



**Event  
Lounge**



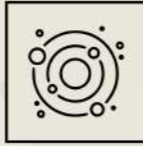
**Swimming  
Pools**



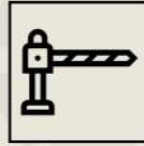
**Club  
House**



**Golf  
Cart**



**Solar  
System**



**Residential  
parking**



**Security  
System**



**Baby  
Sitting Center**



**Central  
Satellite & Wifi**



**Hyper  
Market**



**Bicycle  
Road**



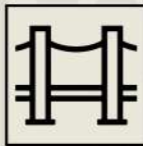
**House  
Keeping**



**Business  
Center**



**Premium  
Mall**



**Boulevard**



**Beauty  
Centers**



**Branded  
Restaurants & Cafes**



**Food  
Court**



**Healthy  
Club & Spa**



**Medical  
Center**



**Pharmacy 24/7**



**Atms**